

Welcome Home

107 JUANITA DR, LIVERPOOL, NY



LISTED AT \$224,900



3 BDRM



1 BATH



1,080
SQFT



1-CAR
GARAGE



.19
ACRES

MLS: S1651710

Welcome to this charming home in Liverpool! Nestled in a peaceful neighborhood just off of Long Branch Road, this delightful home offers proximity to village amenities and Onondaga Lake Park, without the added village taxes. This home features a bedroom on the first floor, perfect for guests or easy accessibility. A partially finished basement area provides a bonus space for a playroom, home office, extra living area, gym, etc. Enjoy the convenience of pedestrian paths connecting the neighborhood streets to both Long Branch and Elmcrest Elementary, allowing you to stay off the main roads.



[Video walkthrough link: bit.ly/juanitatour](https://bit.ly/juanitatour)

PROPERTY DETAILS

- Cape Cod home
- Wood-burning fireplace
- Painted kitchen cabinets
- Kitchen pantry
- Formal dining room
- Hardwood floors
- Newly renovated bathroom
- Skylights in upstairs bedrooms
- Located near the village of Liverpool and Onondaga Lake Park

Feel free to reach out with any questions!

Rachel Losito Baker

REAL ESTATE AGENT



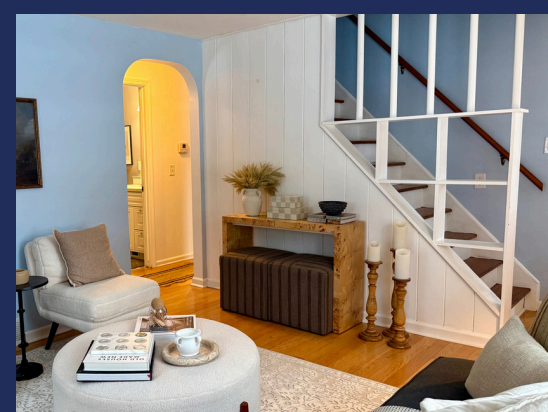
CELL: (315) 956-4221

EMAIL: RACHEL@APEXREBROKERS.COM

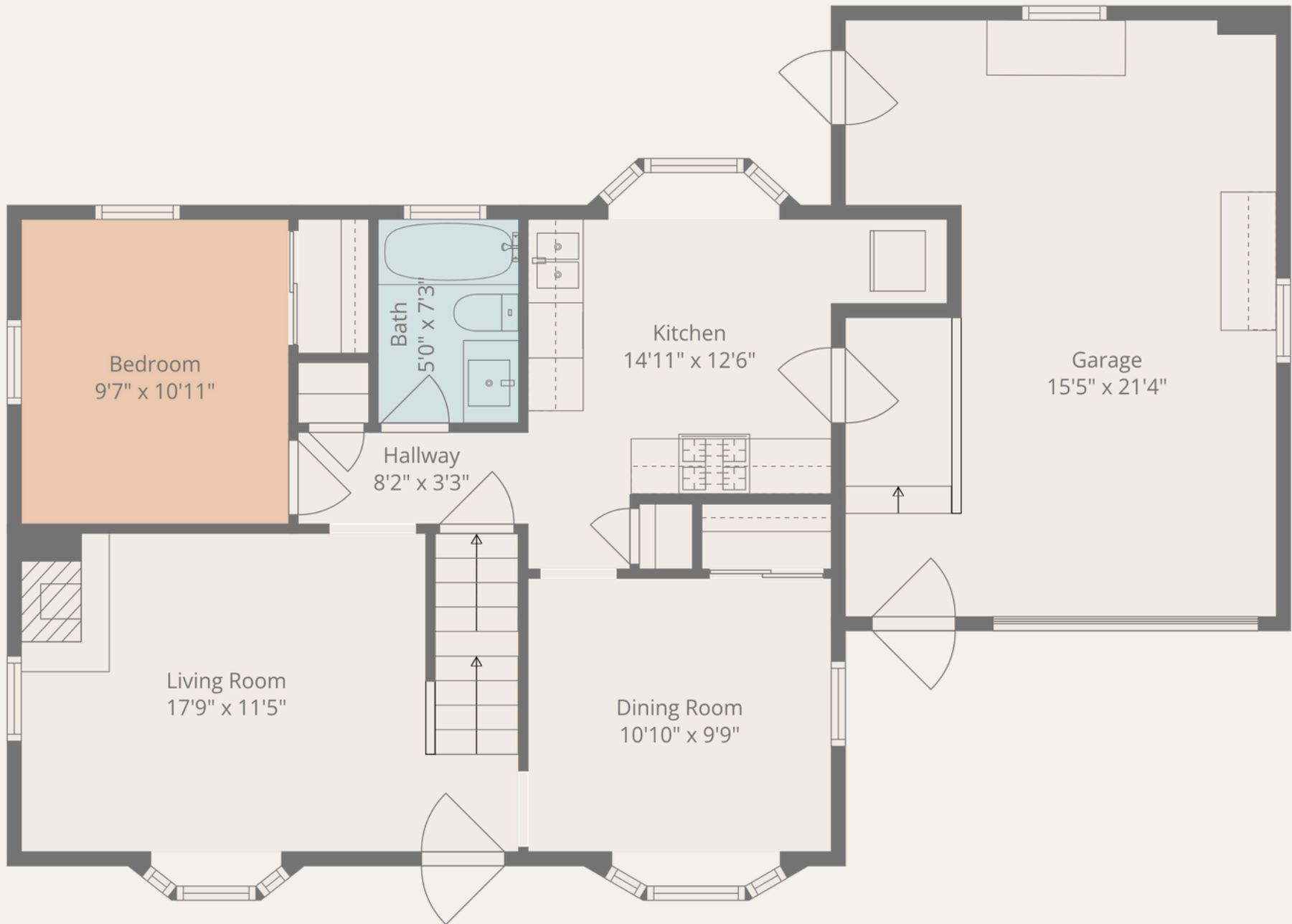
IG: @RACHELFROMAPEX





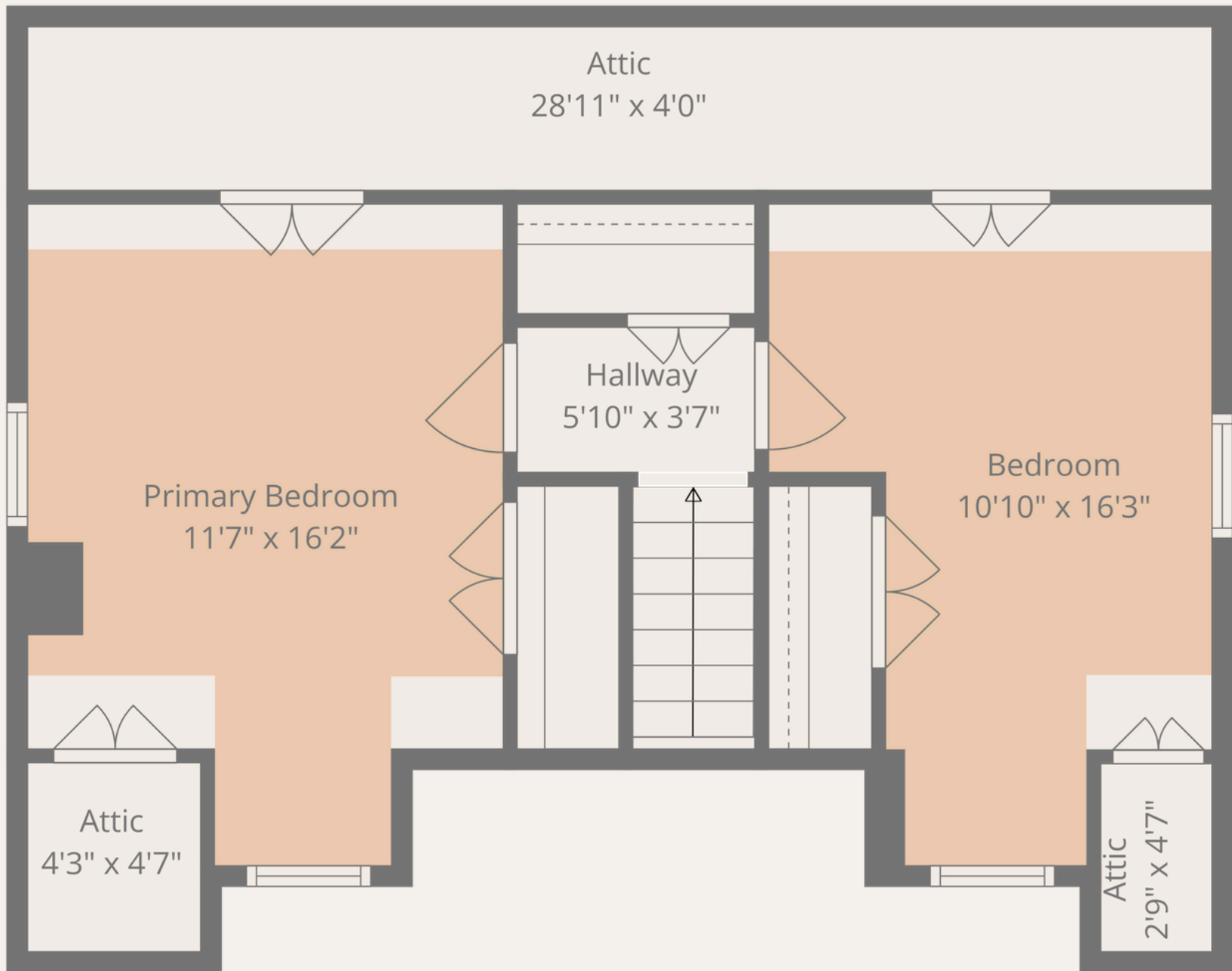






TOTAL: 1414 sq. ft

BELOW GRADE: 386 sq. ft, 1st floor: 665 sq. ft, 2nd floor: 363 sq. ft
 EXCLUDED AREAS: UTILITY: 247 sq. ft, LAUNDRY: 21 sq. ft, EXT. STAIRS: 16 sq. ft,
 GARAGE: 311 sq. ft, BAY WINDOW: 23 sq. ft, ATTIC: 34 sq. ft,
 LOW CEILING: 175 sq. ft, WALLS: 203 sq. ft



TOTAL: 1414 sq. ft

BELOW GRADE: 386 sq. ft, 1st floor: 665 sq. ft, 2nd floor: 363 sq. ft
 EXCLUDED AREAS: UTILITY: 247 sq. ft, LAUNDRY: 21 sq. ft, EXT. STAIRS: 16 sq. ft,
 GARAGE: 311 sq. ft, BAY WINDOW: 23 sq. ft, ATTIC: 34 sq. ft,
 LOW CEILING: 175 sq. ft, WALLS: 203 sq. ft



TOTAL: 1414 sq. ft

BELOW GRADE: 386 sq. ft, 1st floor: 665 sq. ft, 2nd floor: 363 sq. ft
 EXCLUDED AREAS: UTILITY: 247 sq. ft, LAUNDRY: 21 sq. ft, EXT. STAIRS: 16 sq. ft,
 GARAGE: 311 sq. ft, BAY WINDOW: 23 sq. ft, ATTIC: 34 sq. ft,
 LOW CEILING: 175 sq. ft, WALLS: 203 sq. ft

